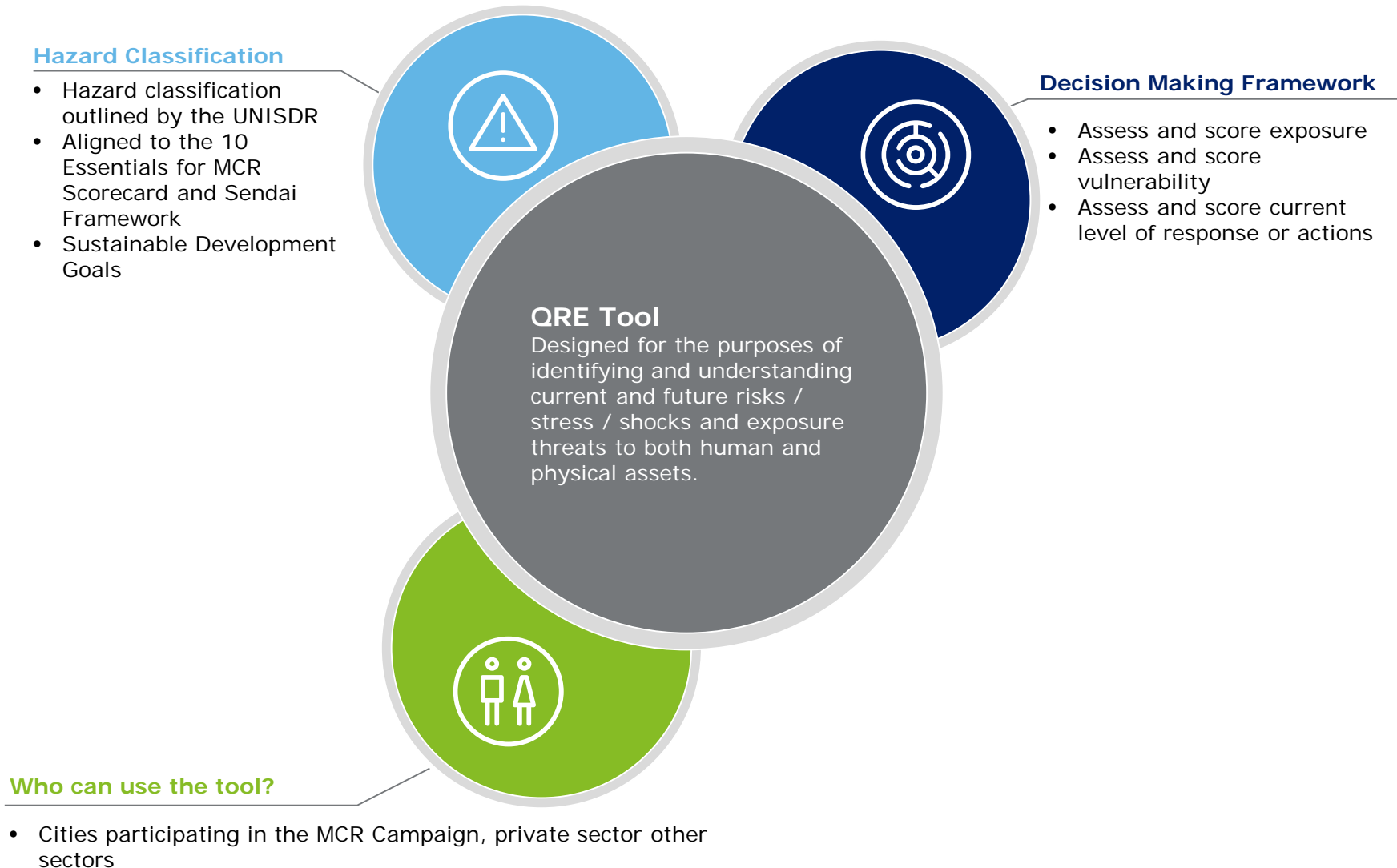


Context of the Quick Risk Estimation (QRE) Tool



Step 1

Provide location, region and/or asset information

Step One

To begin using the QRE Tool use the 'Information' tab to enter the location, region and/or asset specific information that identifies and defines the scope of this risk assessment.

The screenshot displays the 'Quick Risk Estimation (QRE) Tool' Excel spreadsheet, specifically the 'Information' tab. The spreadsheet is titled 'Quick Risk Estimation (QRE) Tool' and features the Deloitte logo. The UNISDR logo is also present, with the text 'The United Nations Office for Disaster Risk Reduction'. The form includes fields for 'Location/Region Name/Title:', 'Description (including asset(s) under examination):', 'Assessor (i.e. person completing this risk estimation):', 'Completion Date:', and 'Review Date/Version:'. The 'Description' field contains the text 'Mackay City' and 'Graeme Newton'. The 'Completion Date' field contains '1/04/2017' and the 'Review Date/Version' field contains '1/04/2018'. A red box highlights the 'Description' field, and a red arrow points to it with the text 'Enter relevant information'. The 'Information' tab is highlighted in the bottom navigation bar, which also includes tabs for 'Cover', 'Instructions', 'Hazard Glossary', 'Risk Matrix', 'Assumptions', 'Hazard Data Entry', 'Data Scores', 'Risk Summary', and 'Vulnerability Report'. A purple circular logo with the text 'My city is getting ready! Sign up today.' is also visible.

| Location/Region Name/Title: |
|-----------------------------|
| Mackay |

| Description (including asset(s) under examination): |
|---|
| City |

| Assessor (i.e. person completing this risk estimation): |
|---|
| Graeme Newton |

| Completion Date: |
|------------------|
| 1/04/2017 |

| Review Date/Version: |
|----------------------|
| 1/04/2018 |

Step 2

Identify hazard families and sub-families

Step 3

Identify main hazards

Step 3

Refer to Columns B and C in the 'Hazard Data Entry' tab.

- Within each hazard family / sub-family identified in Step 2, select the main hazards relevant to the location being assessed.
- An identifier is automatically attached to each selected main hazard.

Copy of QRE_Tool_UNISDR v2 (003).xlsx [Read-Only] - Excel

Thompson, Kelly (AU - Brisbane)

FILE HOME DELOITTE INSERT PAGE LAYOUT FORMULAS DATA REVIEW VIEW PDF-XChange V6

Clipboard Font Alignment Number Styles Cells Editing

Verdana 10 A A Wrap Text General INP_Data Normal 2 Normal 3 6 Section... Normal Bad

AutoSum Fill Sort & Find & Filter Select

B8 Earthquake

| Quick Risk Estimation (QRE) Tool | | | | | | | | | | |
|----------------------------------|---------------------------|------------------|----------------------|--------------------|-----------------------------|--------------------------|--|---|--|-------|
| Hazard Data Entry | | | | | | | | | | |
| Hazard family | Perils | Exposure rating | Vulnerability rating | | | | Total vulnerability rating 1 (low) - 100 (high) | Current level of response measures undertaken or in place | Likelihood ranking score 1 (low) - 100 (high) | Score |
| | | | Infrastructure | Productive sectors | Essential or basic services | Human and social aspects | | | | |
| H1 - Geophysical | | | | | | | | | | |
| Earthquake | Ground movement | Unlikely | Possible | Very unlikely | Unlikely | Possible | 38 | No measures in place | 2.0 | |
| Earthquake | Mass Movement | | | | | | - | | - | |
| Earthquake | Volcanic Activity | | | | | | - | | - | |
| | | | | | | | - | | - | |
| | | | | | | | - | | - | |
| H2 - Hydrological | | | | | | | | | | |
| Flood | Riverine Flood | Extremely likely | Very likely | Very likely | Very likely | Very likely | 80 | Some measures in place | 8.0 | |
| Flood | Fish Flood | Extremely likely | Extremely likely | Extremely likely | Very likely | Extremely likely | 88 | Some measures in place | 8.0 | |
| Landslide | Landslide following event | Likely | Likely | Probable | Possible | Possible | 58 | Few measures in place | 5.0 | |
| Wave Action | Coastal Flood | Extremely likely | Very likely | Extremely likely | Extremely likely | Extremely likely | 88 | Extremely few measures in place | 8.0 | |
| | | | | | | | - | | - | |
| H3 - Meteorological | | | | | | | | | | |
| Tropical Cyclone | Wind | Inevitable | Extremely likely | Extremely likely | Extremely likely | Extremely likely | 90 | Reasonable measures in place | 9.0 | |
| Tropical Cyclone | Storm Surge | Extremely likely | Extremely likely | Extremely likely | Extremely likely | Extremely likely | 90 | Very few measures in place | 8.0 | |

Cover Instructions Hazard Glossary Risk Matrix Information Assumptions Hazard Data Entry Data Scores Risk Summary Vulnerability Report

Select destination and press enter or mouse paste

Step 4

Select perils

Step 4

Refer to Column C in the 'Hazard Data Entry' tab.

- For each main hazard identified, select associated perils relevant to the given location. Use one row per peril.

Quick Risk Estimation (QRE)_Tool.xlsxm - Excel

Thompson, Kelly (AU - Brisbane)

FILE HOME DELOITTE INSERT PAGE LAYOUT FORMULAS DATA REVIEW VIEW PDF-XChange V6

Clipboard Font Alignment Number Styles Cells Editing

Verdana 10 A⁺ A⁻ B I U Merge & Center Conditional Formatting Table Styles

INP_Data Normal 2 Normal 3 6 Section... Normal Bad

Σ AutoSum Fill Sort & Find & Filter Select Clear

C8 Ground movement

| Quick Risk Estimation (QRE) Tool | | | | | | | | | | | | | |
|----------------------------------|-----------------------------------|------------------|----------------------|--------------------|-----------------------------|----------------------------|---|---------------------------------|-----------------|--------------------|-----------------------------|--|--|
| Hazard Data Entry | | | | | | | | | | | | | |
| Hazard family | Perils | Exposure rating | Vulnerability rating | | | Total vulnerability rating | Current level of response measures undertaken or in place | Likelihood ranking score | Severity rating | Risk matrix output | Comments and justifications | | |
| | | | Infrastructure | Productive sectors | Essential or basic services | | | | | | | | |
| H1 - Geophysical | | | | | | | | | | | | | |
| Earthquake | Ground movement | Unlikely | Possible | Very unlikely | Unlikely | Possible | 38 | No measures in place | 2.0 | 20.0 | VL2 | | |
| | Soil movement | | | | | | - | | - | - | - | | |
| | Roof collapse | | | | | | - | | - | - | - | | |
| | Industrial disaster | | | | | | - | | - | - | - | | |
| | Load Fills of Bricks/Brick/Pavers | | | | | | - | | - | - | - | | |
| H2 - Hydrological | | | | | | | | | | | | | |
| Flood | Riverine Flood | Extremely likely | Very likely | Very likely | Very likely | Very likely | 80 | Some measures in place | 8.0 | 40.0 | M6 | | |
| Flood | Flash Flood | Extremely likely | Extremely likely | Extremely likely | Very likely | Extremely likely | 98 | Some measures in place | 8.0 | 40.0 | M6 | | |
| Landslide | Landslide following event | Likely | Likely | Probable | Possible | Possible | 58 | Few measures in place | 5.0 | 20.0 | L4 | | |
| Wave Action | Coastal Flood | Extremely likely | Very likely | Extremely likely | Extremely likely | Extremely likely | 98 | Extremely few measures in place | 8.0 | 70.0 | H7 | | |
| H3 - Meteorological | | | | | | | | | | | | | |
| Tropical Cyclone | Wind | Inevitable | Extremely likely | Extremely likely | Extremely likely | Extremely likely | 90 | Reasonable measures in place | 9.0 | 40.0 | H7 | | |
| Tropical Cyclone | Storm Surge | Extremely likely | Extremely likely | Extremely likely | Inevitable | Extremely likely | 93 | Very few measures in place | 8.0 | 60.0 | H7 | | |
| H4 - Climatological | | | | | | | | | | | | | |
| Drought | Forest Fire | Extremely likely | Very likely | Inevitable | Likely | Extremely likely | 85 | Few measures in place | 8.0 | 50.0 | M6 | | |
| Drought | Heatwave | Extremely likely | Very likely | Inevitable | Extremely likely | Inevitable | 93 | Very few measures in place | 8.0 | 60.0 | H7 | | |

Cover Instructions Hazard Glossary Risk Matrix Information Assumptions Hazard Data Entry Data Scores Risk Summary Vulnerability Report

Select destination and press ENTER or choose Paste

Step 5

Assess exposure

Step 5

Refer to Column D in the 'Hazard Data Entry' tab.

- For each selected peril, assess and score the exposure of the location being assessed using values from Unlikely to Likely.
- Record your justification for each evaluation score in Column N. This will enable validation as well as future revisions and tracking progress.

Quick Risk Estimation (QRE) Tool - Excel

Thompson, Kelly (AU - Brisbane)

Unlikely

| Quick Risk Estimation (QRE) Tool | | | | | | | | | | | | |
|----------------------------------|---------------------------|------------------|----------------------|--------------------|-----------------------------|--------------------------|--|---|--|---|--------------------|-----------------------------|
| Hazard Data Entry | | | | | | | | | | | | |
| Hazard family | Perils | Exposure rating | Vulnerability rating | | | | Total vulnerability rating 1 (low) - 100 (high) | Current level of response measures undertaken or in place | Likelihood ranking score 1 (low) - 100 (high) | Severity rating 1 (low) - 100 (high) | Risk matrix output | Comments and justifications |
| | | | Infrastructure | Productive sectors | Essential or basic services | Human and social aspects | | | | | | |
| H1 - Geophysical | | | | | | | | | | | | |
| Earthquake | Ground movement | Unlikely | Possible | Very unlikely | Unlikely | Possible | 38 | No measures in place | 20 | 20.0 | M2 | |
| | | Unlikely | | | | | - | | - | - | - | |
| | | Improbable | | | | | - | | - | - | - | |
| | | Possible | | | | | - | | - | - | - | |
| | | Probable | | | | | - | | - | - | - | |
| | | Likely | | | | | - | | - | - | - | |
| | | Very likely | | | | | - | | - | - | - | |
| | | Extremely likely | | | | | - | | - | - | - | |
| H2 - Hydrological | | | | | | | | | | | | |
| Flood | Riverine Flood | Extremely likely | Very likely | Very likely | Very likely | Very likely | 88 | Some measures in place | 8.0 | 40.0 | M6 | |
| Flood | Flash Flood | Extremely likely | Extremely likely | Extremely likely | Very likely | Extremely likely | 88 | Some measures in place | 8.0 | 40.0 | M6 | |
| Landslide | Landslide following event | Likely | Likely | Probable | Possible | Possible | 58 | Few measures in place | 5.0 | 20.0 | L4 | |
| Wave Action | Coastal Flood | Extremely likely | Very likely | Extremely likely | Extremely likely | Extremely likely | 88 | Extremely few measures in place | 8.0 | 70.0 | H7 | |
| H3 - Meteorological | | | | | | | | | | | | |
| Tropical Cyclone | Wind | Inevitable | Extremely likely | Extremely likely | Extremely likely | Extremely likely | 90 | Reasonable measures in place | 9.0 | 40.0 | H7 | |
| Tropical Cyclone | Storm Surge | Extremely likely | Extremely likely | Extremely likely | Inevitable | Extremely likely | 93 | Very few measures in place | 8.0 | 60.0 | H7 | |
| | | | | | | | - | | - | - | - | |
| | | | | | | | - | | - | - | - | |
| | | | | | | | - | | - | - | - | |
| H4 - Climatological | | | | | | | | | | | | |
| Drought | Forest Fire | Extremely likely | Very likely | Inevitable | Likely | Extremely likely | 85 | Few measures in place | 8.0 | 50.0 | M6 | |
| Drought | Heatwave | Extremely likely | Very likely | Inevitable | Extremely likely | Inevitable | 93 | Very few measures in place | 8.0 | 60.0 | H7 | |

Cover | Instructions | Hazard Glossary | Risk Matrix | Information | Assumptions | Hazard Data Entry | Data Scores | Risk Summary | Vulnerability Report

Step 6

Assess vulnerability

Step 6

Refer to Column E - H in the 'Hazard Data Entry' tab.

- For each selected peril, assess and score the vulnerability in each of the four categories - Infrastructure, Productive sectors, Essential or basic services and Human and social aspects using values from Unlikely to Inevitable.
- Record your justification for each evaluation score in Column N. This will enable validation as well as future revisions and tracking progress.

Quick Risk Estimation (QRE) Tool.xlsx - Excel

Thompson, Kelly (AU - Brisbane)

FILE HOME DELOITTE INSERT PAGE LAYOUT FORMULAS DATA REVIEW VIEW PDF-XChange V6

Clipboard Font Alignment Number Styles Cells Editing

Verdana 10 A A Wrap Text Merge & Center General Conditional Format as Table INP_Data Normal 2 Normal 3 6 Section Normal Bad

B I U

Step 7

Assess the level of current actions or measures undertaken

Step 7

Refer to Column J in the 'Hazard Data Entry' tab.

- For each selected peril, assess and score the level of current actions and measures in place to address and mitigate the peril in the location being assessed using values from "No measures in place" to "Complete control of disaster".
- Record your justification for each evaluation score in Column N. This will enable validation as well as future revisions and tracking progress.

Quick Risk Estimation (QRE)_Tool.xlsx - Excel

Thompson, Kelly (AU - Brisbane)

FILEHOMEDELOITTEINSERTPAGE LAYOUTFORMULASDATAREVIEWVIEWPDF-XChange V6

ClipboardFontAlignmentNumberStylesCellsEditing

Verdana10Wrap TextMerge & CenterConditional FormattingTable Styles

Normal 2Normal 3.6InP_DataSectionNormalBad

AutoSumFillSort & Find & FilterSelect

J8No measures in place

| Quick Risk Estimation (QRE) Tool | | | | | | | | | | | | |
|----------------------------------|---------------------------|------------------|----------------------|--------------------|-----------------------------|--------------------------|--|---|---|---|--------------------|-----------------------------|
| Hazard Data Entry | | | | | | | | | | | | |
| Hazard Family | Perils | Exposure rating | Vulnerability rating | | | | Total vulnerability rating 1 (low) - 100 (high) | Current level of response measures undertaken or in place | Likelihood rating score 1 (low) - 100 (high) | Severity rating 1 (low) - 100 (high) | Risk matrix output | Comments and justifications |
| | | | Infrastructure | Productive sectors | Essential or basic services | Human and social aspects | | | | | | |
| H1 - Geophysical | | | | | | | | | | | | |
| Earthquake | Ground movement | Unlikely | Possible | Very unlikely | Unlikely | Possible | 38 | No measures in place | 20 | 20.0 | V1.2 | |
| | | | | | | | | | | | | |
| | | | | | | | | | | | | |
| | | | | | | | | | | | | |
| | | | | | | | | | | | | |
| H2 - Hydrological | | | | | | | | | | | | |
| Flood | Riverine Flood | Extremely likely | Very likely | Very likely | Very likely | Very likely | 80 | Some measures in place | 80 | 40.0 | M6 | |
| Flood | Flash Flood | Extremely likely | Extremely likely | Extremely likely | Very likely | Extremely likely | 88 | Some measures in place | 80 | 40.0 | M6 | |
| Landslide | Landslide following event | Likely | Likely | Probable | Possible | Possible | 50 | Few measures in place | 50 | 20.0 | L4 | |
| Wave Action | Coastal Flood | Extremely likely | Very likely | Extremely likely | Extremely likely | Extremely likely | 88 | Extremely few measures in place | 80 | 70.0 | H7 | |
| | | | | | | | | | | | | |
| H3 - Meteorological | | | | | | | | | | | | |
| Tropical Cyclone | Wind | Inevitable | Extremely likely | Extremely likely | Extremely likely | Extremely likely | 90 | Reasonable measures in place | 90 | 40.0 | H7 | |
| Tropical Cyclone | Storm Surge | Extremely likely | Extremely likely | Extremely likely | Inevitable | Extremely likely | 93 | Very few measures in place | 80 | 60.0 | H7 | |
| | | | | | | | | | | | | |
| | | | | | | | | | | | | |
| H4 - Climatological | | | | | | | | | | | | |
| Drought | Forest Fire | Extremely likely | Very likely | Inevitable | Likely | Extremely likely | 85 | Few measures in place | 80 | 50.0 | M6 | |
| Drought | Heatwave | Extremely likely | Very likely | Inevitable | Extremely likely | Inevitable | 93 | Very few measures in place | 80 | 60.0 | H7 | |
| | | | | | | | | | | | | |
| | | | | | | | | | | | | |

CoverInstructionsHazard GlossaryRisk MatrixInformationAssumptionsHazard Data EntryData ScoresVulnerability Report

Step 8

Analyse results and Report

Step 8

Refer to Columns K, L and M in the 'Hazard Data Entry' tab.

- Based on your assessment across steps 5 to 7, the QRE tool will auto-populate two final numerical values: A Likelihood Ranking Score and Severity Rating; and, identify the Risk Rating for the Hazard based upon the ratings identified in the '*Risk Matrix*' tab.

a) **Likelihood ranking score:** refers to the likelihood of the event occurring in comparison to the other assessed events in the specified location, based on the location's exposure and vulnerability to that event, and the current actions and measures undertaken. The lower the ranking score the lower the potential requirement for action. The higher the ranking score the higher potential requirement for action. Please note this score is not a statistical measure of probability but a ranking score to enable prioritisation of hazards/perils across all assessed hazards/perils.

b) **Severity rating:** refers to the impact and consequence level that a hazard would have on the location under study and its community, ranging from 1 to 100, being 1 the lowest severity and 100 the highest.

c) **Risk Rating:** refers to the allocation of a risk rating ranging from Very Low to Catastrophic aligned to the '*Risk Matrix*', which is dependent upon the likelihood ranking and severity rating calculated.

| Current level of response measures undertaken or in place | Likelihood ranking score | Severity rating | Risk matrix output | Comments and justifications |
|---|--------------------------|-----------------------|--------------------|-----------------------------|
| | 1 (low) - 10 (high) | 1 (low) - 100 (high) | | |
| | - | - | - | |
| | - | - | - | |

Reporting

- A data overview per each hazard sub-family will be auto-populated in the 'Data Scores' tab to allow individualised analysis of results. This tab includes a summary of the criteria scores obtained as a result of the assessment that will be unlocked for the user to use as required.
- The QRE Tool also provides two combined Reports in two consecutive tabs: Risk Summary and Vulnerability Report.
 - a) The **Risk Summary** maps the Disaster Likelihood and Severity in the first table compared against all hazards/perils assessed. The second table maps the Disaster Exposure and Vulnerability compared against all hazards/perils assessed.
 - b) The **Vulnerability Report** maps the four Vulnerability Categories exposure and vulnerability ratings individually.

These Reports provide a visual representation or 'Dashboard' of the results of the assessment, assisting you in analysing the outcomes of your exercise and in developing potential current and future risk scenarios.

| Quick Risk Estimation (QRE) Tool Data Scores | | | | | | | | | | | |
|---|------------------|---------------------------|------------------------|----------------|--------------------|-----------------------------|--------------------------|------------------------------------|----------------------------------|---------------------------------|-------------------------|
| Hazard family | Disaster | Peril | Exposure rating (1-10) | Infrastructure | Productive sectors | Essential or basic services | Human and social aspects | Total vulnerability rating (1-100) | Current response measures (1-10) | Likelihood ranking score (1-10) | Severity rating (1-100) |
| H1 - Geophysical | | | - | - | - | - | - | - | - | - | - |
| | | | - | - | - | - | - | - | - | - | - |
| | | | - | - | - | - | - | - | - | - | - |
| | | | - | - | - | - | - | - | - | - | - |
| H2 - Hydrological | Flood | Riverine Flood | 9 | 8 | 8 | 8 | 8 | 80 | 4 | 8 | 40.0 |
| | Flood | Flash Flood | 9 | 9 | 9 | 8 | 9 | 88 | 4 | 8 | 40.0 |
| | Landslide | Landslide following event | 7 | 7 | 6 | 5 | 5 | 58 | 3 | 5 | 20.0 |
| | Wave Action | Coastal Flood | 9 | 8 | 9 | 9 | 9 | 88 | 1 | 8 | 70.0 |
| H3 - Meteorological | Tropical Cyclone | Wind | 10 | 9 | 9 | 9 | 9 | 90 | 5 | 9 | 40.0 |
| | Tropical Cyclone | Storm Surge | 9 | 9 | 9 | 10 | 9 | 93 | 2 | 8 | 60.0 |
| | | | - | - | - | - | - | - | - | - | - |
| | | | - | - | - | - | - | - | - | - | - |
| H4 - Climatological | | | - | - | - | - | - | - | - | - | - |
| | | | - | - | - | - | - | - | - | - | - |
| | | | - | - | - | - | - | - | - | - | - |
| | | | - | - | - | - | - | - | - | - | - |
| H5 - Biological | | | - | - | - | - | - | - | - | - | - |
| | | | - | - | - | - | - | - | - | - | - |
| | | | - | - | - | - | - | - | - | - | - |
| | | | - | - | - | - | - | - | - | - | - |
| H6 - Extraterrestrial | | | - | - | - | - | - | - | - | - | - |
| | | | - | - | - | - | - | - | - | - | - |
| | | | - | - | - | - | - | - | - | - | - |
| | | | - | - | - | - | - | - | - | - | - |
| H7 - Anthropogenic | | | - | - | - | - | - | - | - | - | - |
| | | | - | - | - | - | - | - | - | - | - |
| | | | - | - | - | - | - | - | - | - | - |
| | | | - | - | - | - | - | - | - | - | - |
| H8 - Other (To be completed by User) | | | - | - | - | - | - | - | - | - | - |
| | | | - | - | - | - | - | - | - | - | - |
| | | | - | - | - | - | - | - | - | - | - |
| | | | - | - | - | - | - | - | - | - | - |

Final Reports

Risk Summary and Vulnerability Report

